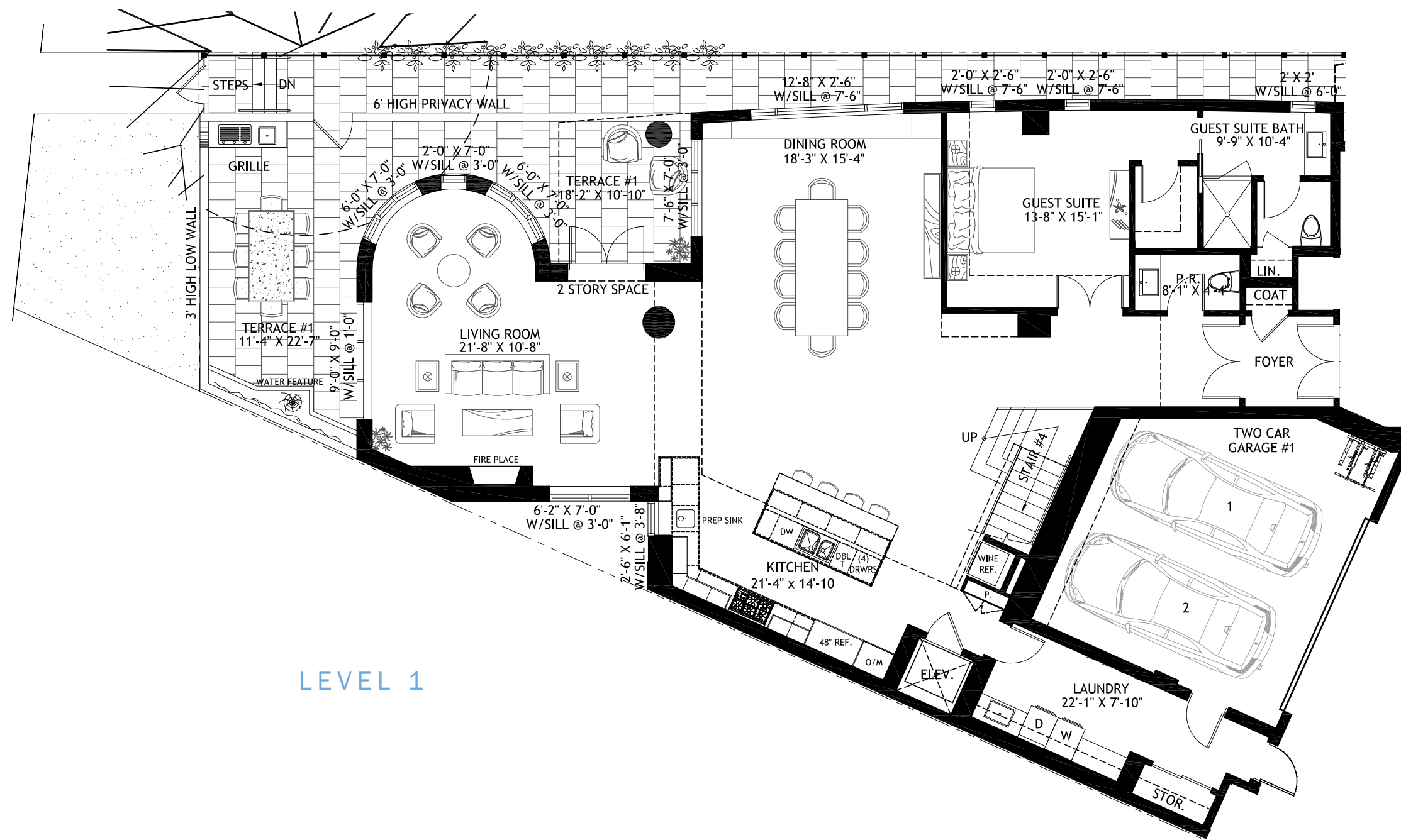
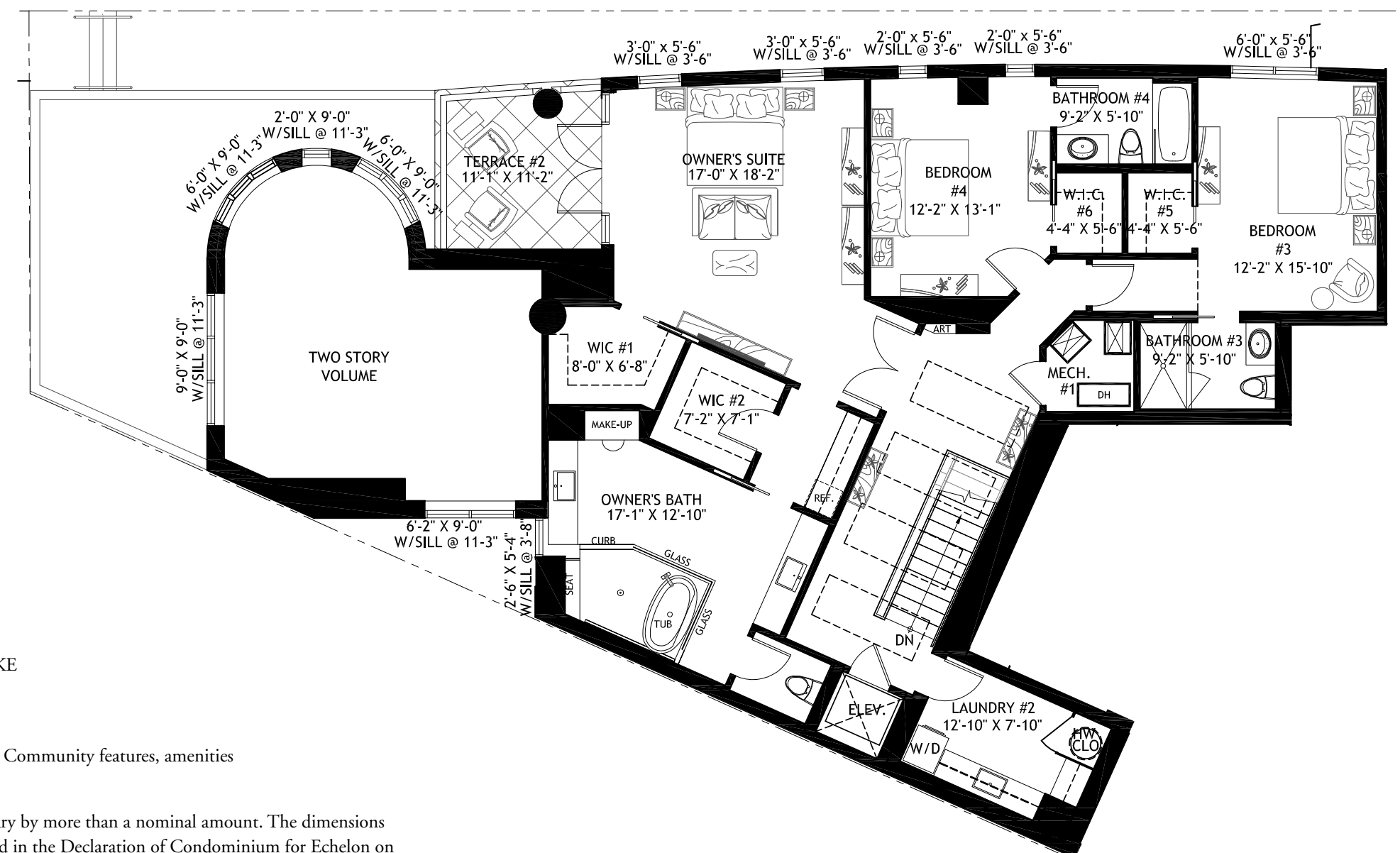




ECHELON ON PALM



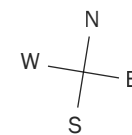
LEVEL 1



LEVEL 2

BAY HOUSE TOWNHOME LEVEL 1 AND 2

- 4 Bedrooms
 - 4 Full Baths
 - 1 Half Bath
 - 2 Story Volume Ceiling
 - Private 2-Car Garage
 - Private Entrance From Gulfstream Ave.
 - Up to 21' 3\"/>
- | | |
|--------------------------|----------------------|
| Interior | 4,437 sq. ft. |
| Terraces | 629 sq. ft. |
| Total living area | 5,066 sq. ft. |



ORAL REPRESENTATIONS CANNOT BE RELIED UPON AS CORRECTLY STATING REPRESENTATIONS OF THE DEVELOPER. FOR CORRECT REPRESENTATIONS MAKE REFERENCE TO THE INFORMATION CONTAINED HEREIN AND THE DOCUMENTS REQUIRED BY SECTION 718.503, FLORIDA STATUTES, TO BE FURNISHED BY A DEVELOPER TO A BUYER OR LESSEE.

Equal Housing Opportunity. Broker participation encouraged. Sketches and illustrations are artist's renderings. Details are subject to changes and field variations. All dimensions are approximate. Community features, amenities and pricing are approximate and subject to change without notice. Developer reserves the right to replace with items of equal value.

There are various methods for calculating the total square footage of a condominium unit, and depending on the method of calculation, the quoted square footage of a condominium unit may vary by more than a nominal amount. The dimensions stated in this brochure are measured to the exterior boundaries of the exterior walls and the centerline of interior demising walls and, in fact, are larger than the dimensions of the "Unit" as defined in the Declaration of Condominium for Echelon on Palm, which are measured using interior measurements. All dimensions are approximate and all floor plans and development plans are subject to change.